

Concert Orchestra

This orchestra will provide students the opportunity to review and develop fundamental skills necessary for future success at the Non-Varsity level. Classroom instruction will involve expanding technique, introducing positions, developing vibrato, improving tone quality, learning various bowing styles, and building sight-reading skills. Students may be expected to attend a weekly sectional/rehearsal before or after school if needed. Participation in private lessons, region auditions, and solo/ensemble contest is encouraged. Students will be offered an opportunity to participate in full orchestra when applicable.

Concert Cello

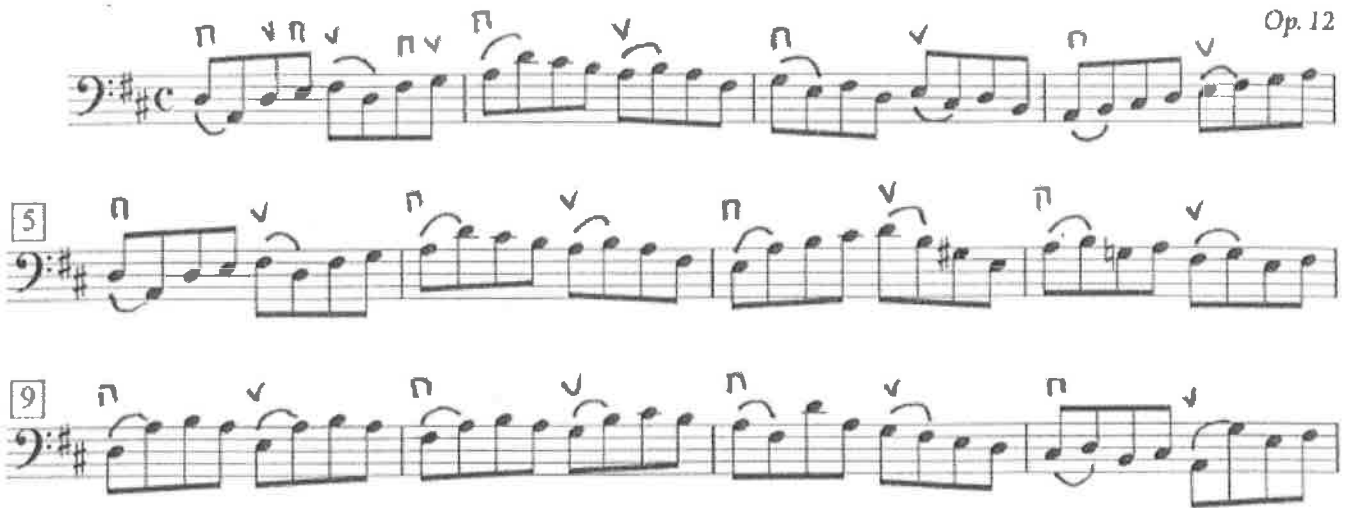
D Major Scale

Quarter Note = 72



Etude - Quarter Note = 72

Op. 12



Camerata Orchestra

This orchestra will provide students the opportunity to continue to develop fundamental skills necessary for future success at the Sinfonia level. Classroom instruction will involve expanding technique, introduction to upper positions, developing vibrato, improving tone quality, learning various bowing styles, and building sight-reading skills. Students may be expected to attend a weekly sectional/rehearsal before or after school if needed. Participation in private lessons, region auditions, and solo/ensemble contest is encouraged. Students will participate in full orchestra when offered in addition to their string orchestra obligations.

Cello

Quarter Note = 80

F Major

A single line of musical notation in bass clef, F Major, 4/4 time. The piece consists of 10 measures. Fingerings are indicated by numbers 1-4 above the notes. The first two measures are quarter notes: G2 (finger 2), A2 (finger 2). The next two measures are eighth notes: B2 (finger 1), C3 (finger 1), D3 (finger 3), E3 (finger 4). The next two measures are eighth notes: F3 (finger 2), G3 (finger 1), A3 (finger 2), B3 (finger 1). The final two measures are quarter notes: C4 (finger 2), D4 (finger 2). A double bar line is at the end.

Etude – Quarter Note = 76-92

Allegro moderato

C. Schroeder, Op. 48, No. 7

Three lines of musical notation in bass clef, F Major, 6/8 time. The piece consists of 12 measures. The first line starts at measure 31 and includes the tempo marking 'M.' and the dynamic marking 'f'. The second line starts at measure 6. The third line starts at measure 12. The notation features eighth and sixteenth notes with various fingerings and slurs. A double bar line is at the end of the third line.