

Concert Orchestra

This orchestra will provide students the opportunity to review and develop fundamental skills necessary for future success at the Non-Varsity level. Classroom instruction will involve expanding technique, introducing positions, developing vibrato, improving tone quality, learning various bowing styles, and building sight-reading skills. Students may be expected to attend a weekly sectional/rehearsal before or after school if needed. Participation in private lessons, region auditions, and solo/ensemble contest is encouraged. Students will be offered an opportunity to participate in full orchestra when applicable.

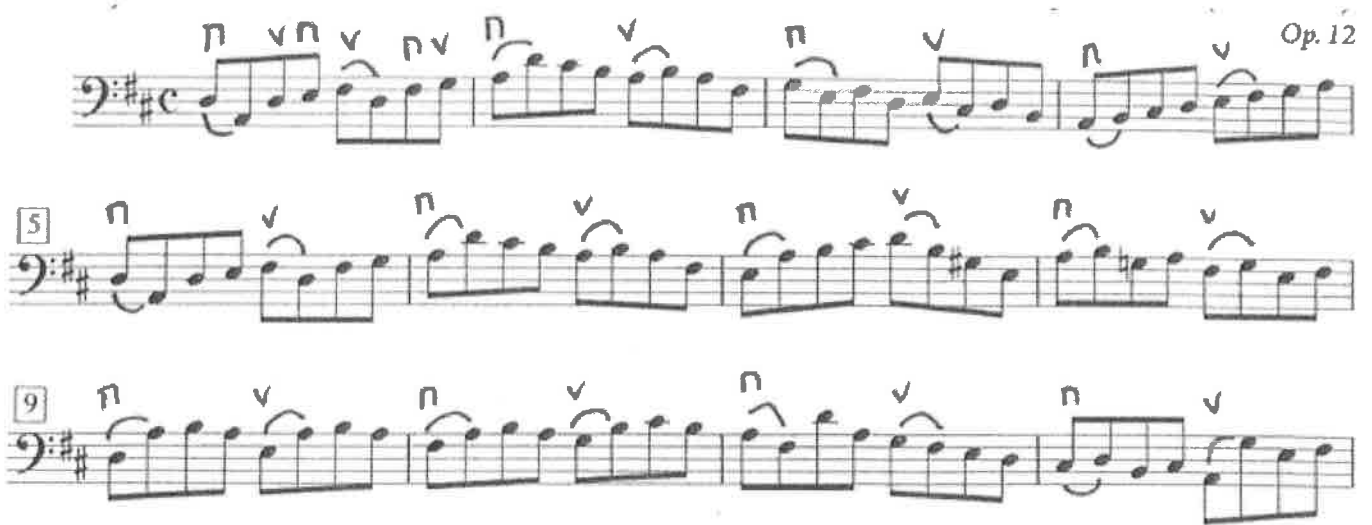
Concert Bass

D Major Scale

Quarter Note = 72



Etude – Quarter Note = 72



Camerata Orchestra

This orchestra will provide students the opportunity to continue to develop fundamental skills necessary for future success at the Sinfonia level. Classroom instruction will involve expanding technique, introduction to upper positions, developing vibrato, improving tone quality, learning various bowing styles, and building sight-reading skills. Students may be expected to attend a weekly sectional/rehearsal before or after school if needed. Participation in private lessons, region auditions, and solo/ensemble contest is encouraged. Students will participate in full orchestra when offered in addition to their string orchestra obligations.

Bass

Quarter Note = 80

F Major

Handwritten bass guitar notation for F Major. The piece is in 4/4 time with a tempo of Quarter Note = 80. The key signature has one flat (Bb). The notation consists of a single staff with a bass clef. Above the staff, fret numbers are written: 0 2 4-1 4-2 4 2-4 1-4 2 0. The music features a sequence of eighth notes and quarter notes, ending with a double bar line.

Etude – Quarter = 80-92

Handwritten bass guitar notation for an Etude in F Major. The piece is in 4/4 time with a tempo of Quarter = 80-92. The key signature has one flat (Bb). The notation consists of three staves with a bass clef. The first staff begins with a large black scribble, followed by a bracketed section of music. The second and third staves continue the piece with various rhythmic patterns, including eighth and sixteenth notes, and end with a double bar line.